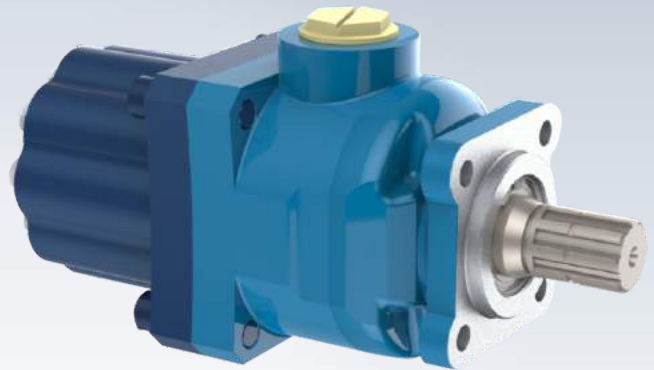
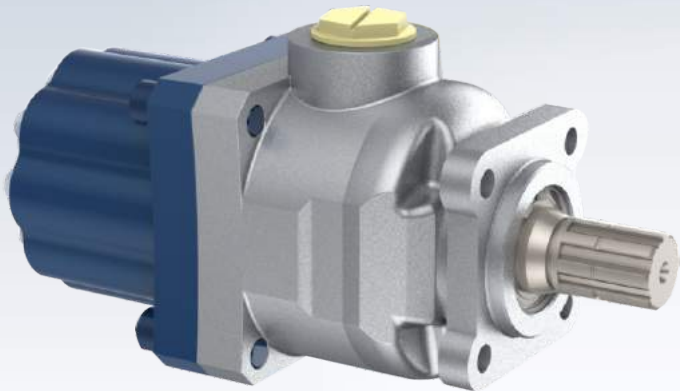


## A4PP

Axial Piston Pumps  
Single Flow

## A4PL

Axial Piston Pumps  
Dual Flow



### A4PP - Axial Piston Pumps

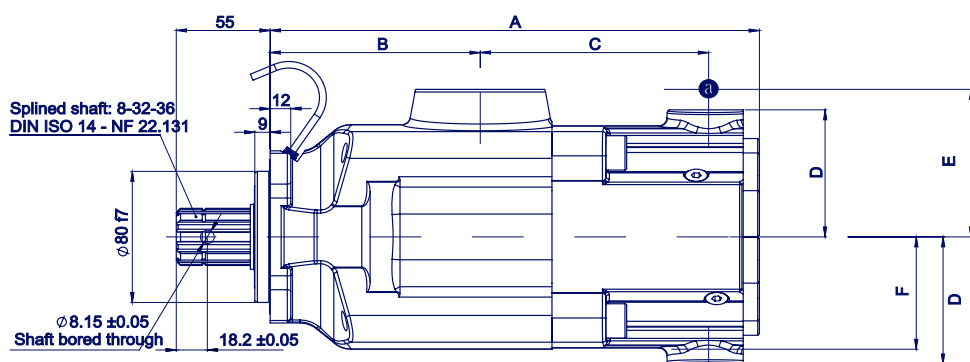
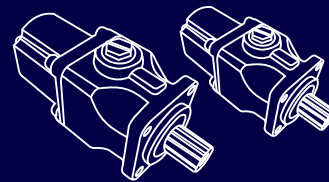
- Compact Design,
- Economical Conception,
- High Power Density,
- High Overall Efficiency,
- High Rotating Speeds,
- High Output Pressure,
- 350 bar Cont. Work. Pressure,
- 400 bar Peak Pressure,

### A4PL - Dual Flow Piston Pumps

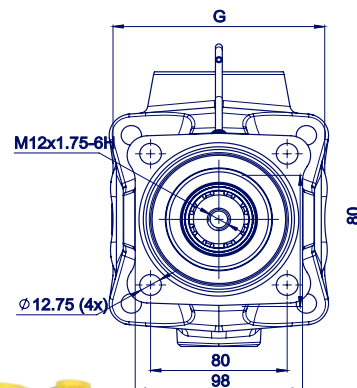
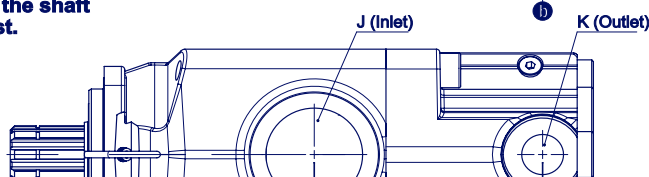
- Compact Design,
- Economical Conception,
- High Power Density,
- High Overall Efficiency,
- High Rotating Speeds,
- High Output Pressure,
- 350 bar Cont. Work. Pressure,
- 400 bar Peak Pressure,

# A4PP

# High Pressure Axial Piston Pumps



Additional bore on the shaft  
available on request.



Pump reference	Displac. (cc/rev)		A	B	C	D	E	F	G	J	K	Weight (kg)	Overhang torque (N.m)
	a	b											

### ► Single flow

A4PP 25	25	-	261	102	126	47	78	64	107	G 1 1/2"	G 3/4"	15	17
A4PP 32	34	-	261	102	126	47	78	64	107	G 1 1/2"	G 3/4"	15	17
A4PP 40	43	-	261	102	126	47	78	64	107	G 1 1/2"	G 3/4"	15	17
A4PP 50	50	-	261	102	126	47	78	64	107	G 1 1/2"	G 3/4"	15	17
A4PP 63	66	-	290	123	138.8	69	90	69	124	G 2"	G 3/4"	23.5	17
A4PP 80	82	-	290	123	138.8	69	90	69	124	G 2"	G 3/4"	23.5	31.5
A4PP 100	104	-	290	123	138.8	69	90	69	124	G 2"	G 3/4"	23.5	31.5
A4PP 114	114	-	290	123	138.8	69	90	69	124	G 2"	G 3/4"	23.5	31.5

A4PP 25	26	-	226	94.9	103.3	62	73.2	54	98	G 1 1/2"	G 3/4"	12.5	12.6
A4PP 40	40	-	226	94.9	103.3	62	73.2	54	98	G 1 1/2"	G 3/4"	12.5	12.6
A4PP 50	50	-	226	94.9	103.3	62	73.2	54	98	G 1 1/2"	G 3/4"	12.5	12.6
A4PP 65	65	-	243	102.5	112.8	63	78	65	107	G 1 1/2"	G 3/4"	16	17.6
A4PP 80	78	-	247	102.5	116.3	63	78	65	107	G 1 1/2"	G 3/4"	17	21.3

### ► Twin-flow - 2 x 3 pistons

A4PP 2 x 32	32	32	290	123	138.8	69	90	69	124	G 2"	G 3/4"	23.5	31.5
A4PP 2 x 40	39	39	290	123	138.8	69	90	69	124	G 2"	G 3/4"	23.5	31.5
A4PP 2 x 50	52	52	290	123	138.8	69	90	69	124	G 2"	G 3/4"	23.5	31.5
A4PP 2 x 57	57	57	290	123	138.8	69	90	69	124	G 2"	G 3/4"	23.5	31.5
A4PP 2 x 75	75	75	302	126	147.8	72.5	90	72.5	135	G 2"	G 3/4"	26.8	38.7

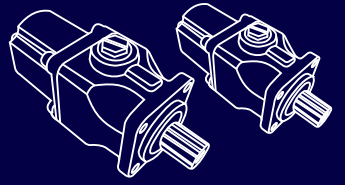
A4PP 75-40	75	40	302	126	147.8	72.5	90	72.5	135	G 2"	G 3/4"	27.4	38.7
A4PP 2 x 25	25	25	243	102.5	112.8	63	78	65	107	G 1 1/2"	G 3/4"	16	17.6
A4PP 2 x 32	32	32	243	102.5	112.8	63	78	65	107	G 1 1/2"	G 3/4"	16	17.6
A4PP 2 x 40	39	39	247	102.5	116.3	63	78	65	107	G 1 1/2"	G 3/4"	17	21.3

### ► Twin-flow - 2 x 5 pistons

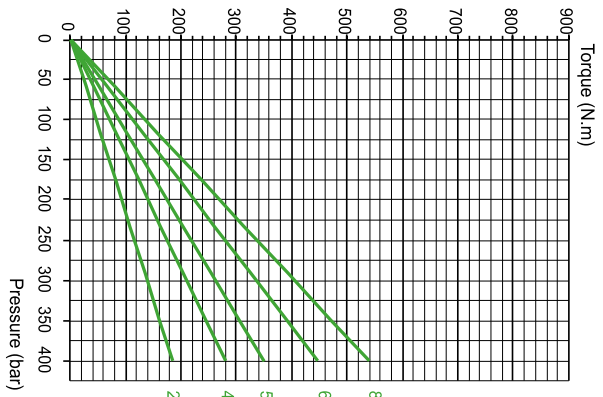
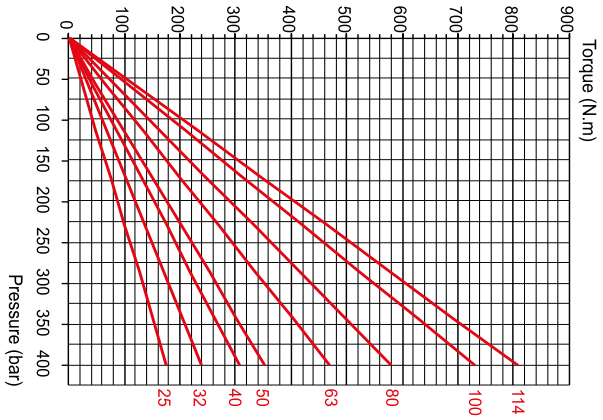
A4PP 2 x 32	32	32	287	123	133.8	77.5	90	69	124	G 2"	G 3/4"	24.6	34.4
A4PP 2 x 40	40	40	287	123	133.8	77.5	90	69	124	G 2"	G 3/4"	24.6	34.4
A4PP 2 x 55	55	55	287	123	133.8	77.5	90	69	124	G 2"	G 3/4"	24.6	34.4
A4PP 2 x 67	67	67	287	123	133.8	77.5	90	69	124	G 2"	G 3/4"	24.6	34.4
A4PP 55-33	55	33	287	123	133.8	77.5	90	69	124	G 2"	G 3/4"	24.6	34.4
A4PP 67-40	67	40	287	123	133.8	77.5	90	69	124	G 2"	G 3/4"	24.6	34.4

# A4PP

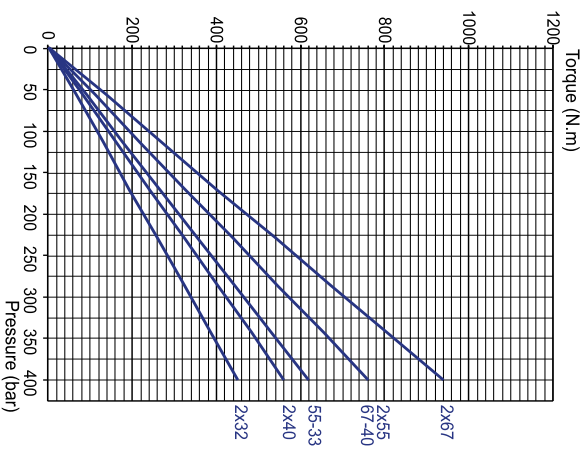
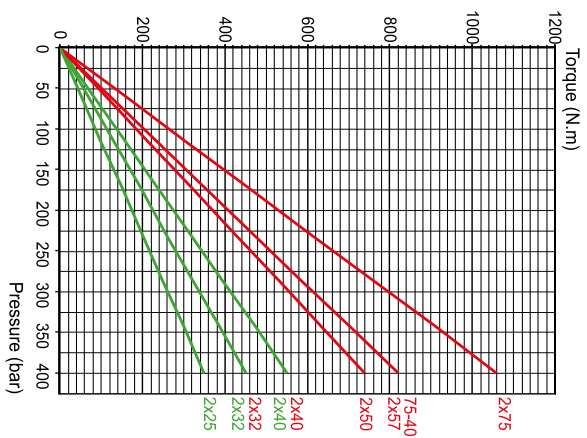
## High Pressure Axial Piston Pumps



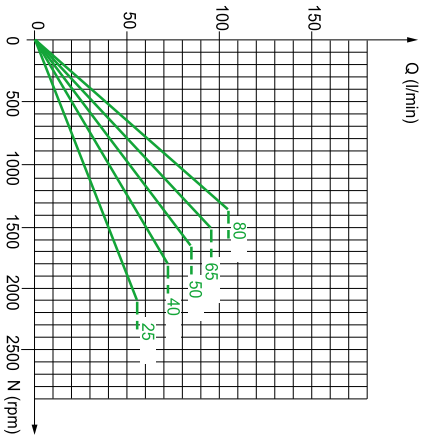
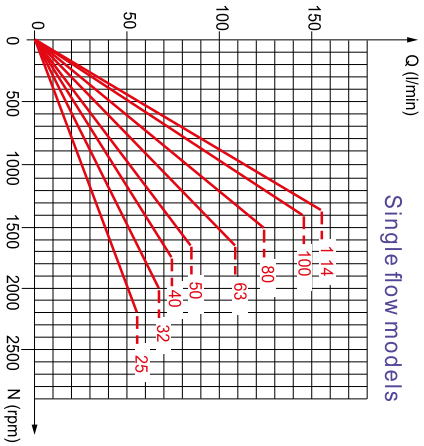
Single flow models



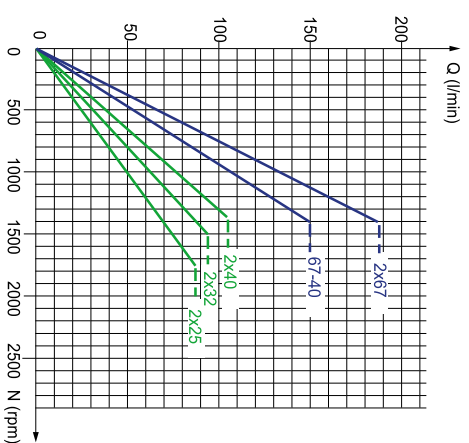
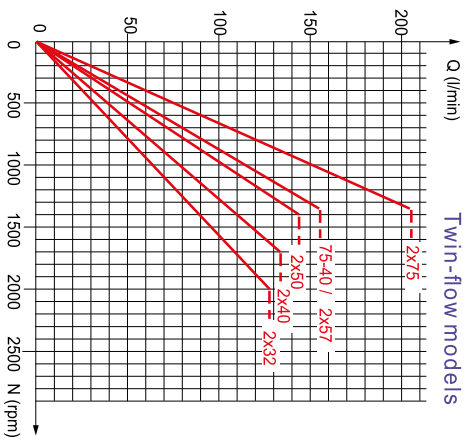
Twin-flow models



Single flow models

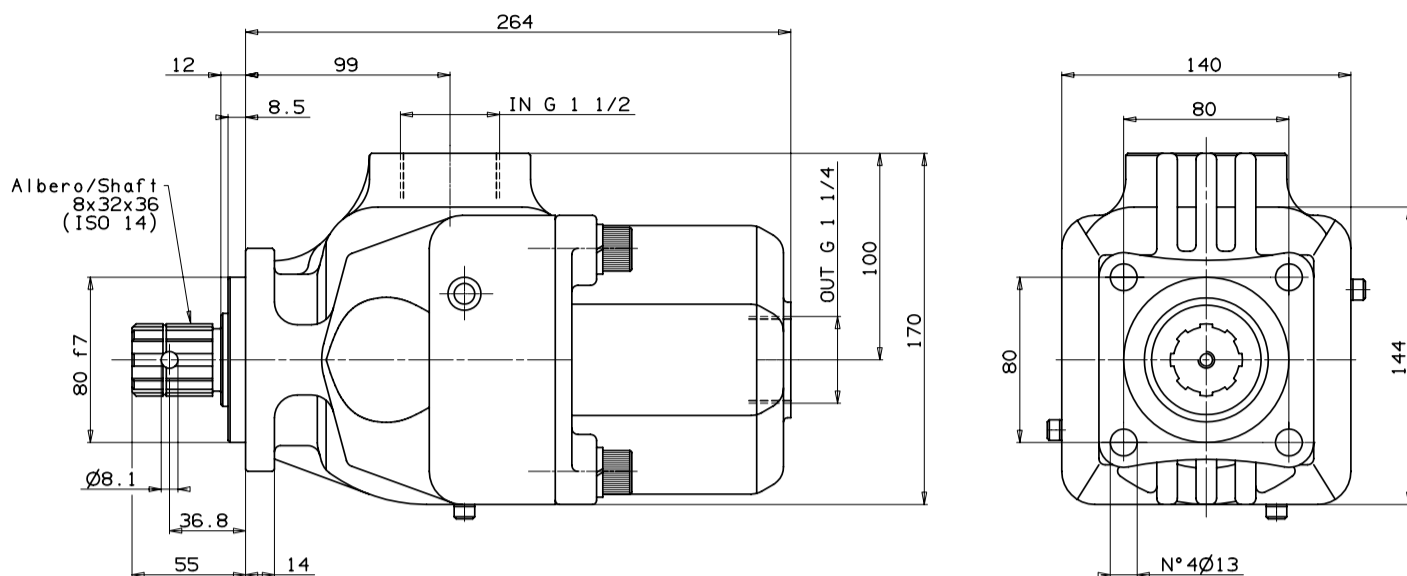
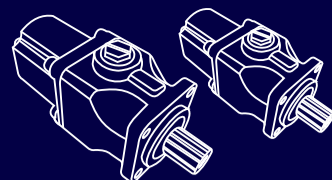


Twin-flow models



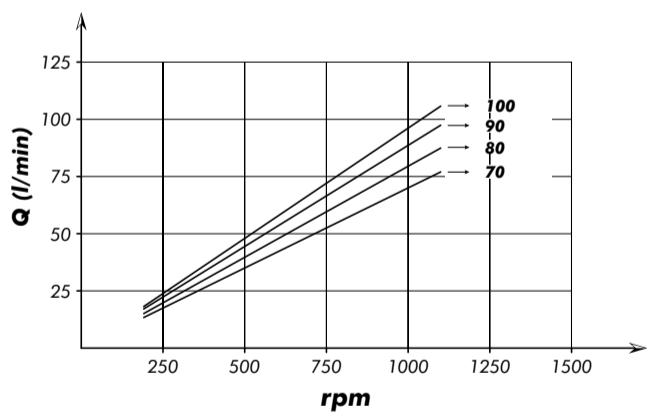
# A4PP

## High Pressure Axial Piston Pumps

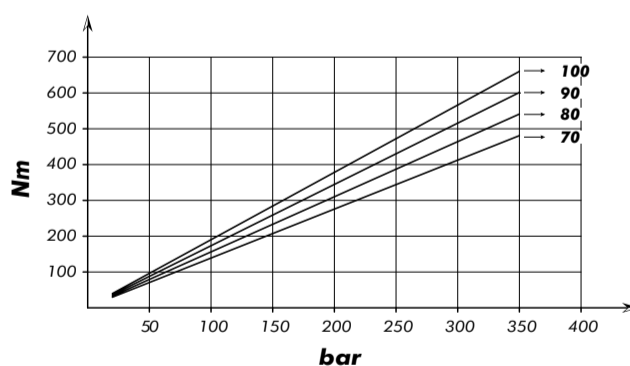


Pump type	Rotation	Displacement cm <sup>3</sup> /rev	Pressure		Max speed rpm	Weight kg
			Max bar	Peak bar		
<b>70 cc</b>	<b>Bi-Directional</b>	73	300	350	1500	20,9
<b>80 cc</b>	<b>Bi-Directional</b>	82,2				20,3
<b>90 cc</b>	<b>Bi-Directional</b>	91,4				20,3
<b>100 cc</b>	<b>Bi-Directional</b>	100,4				20

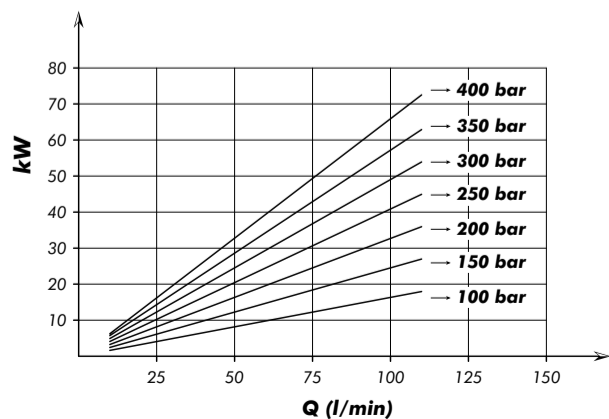
### FLOW



### DRIVE TORQUE

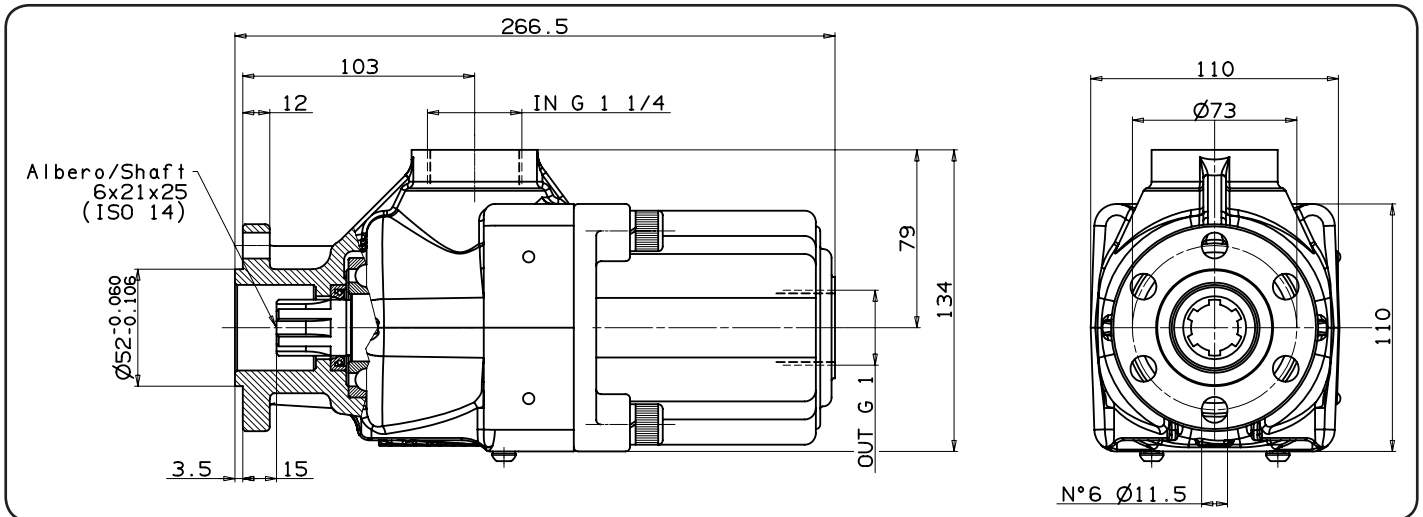
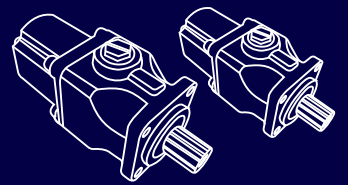


### POWER INPUT

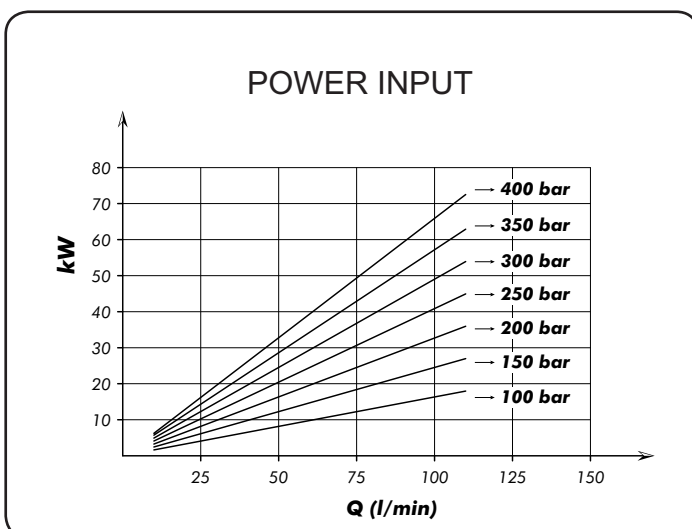
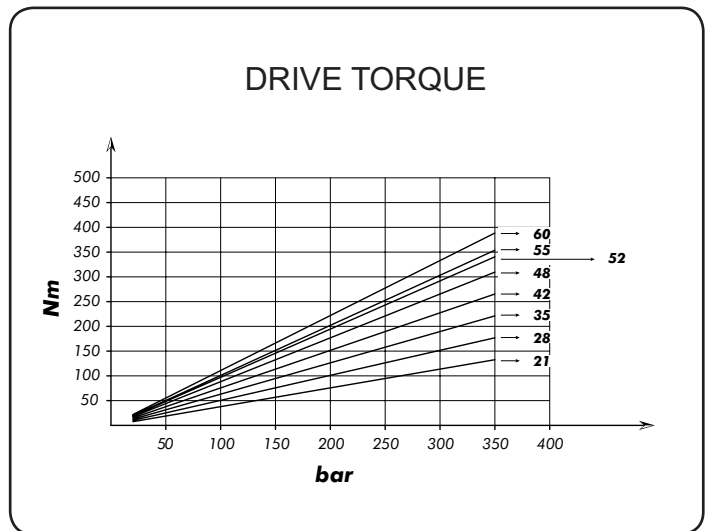
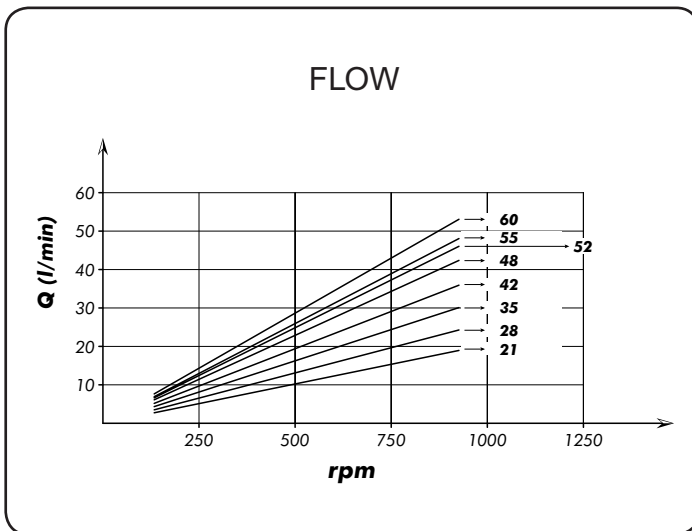


# A4PP

# High Pressure Axial Piston Pumps

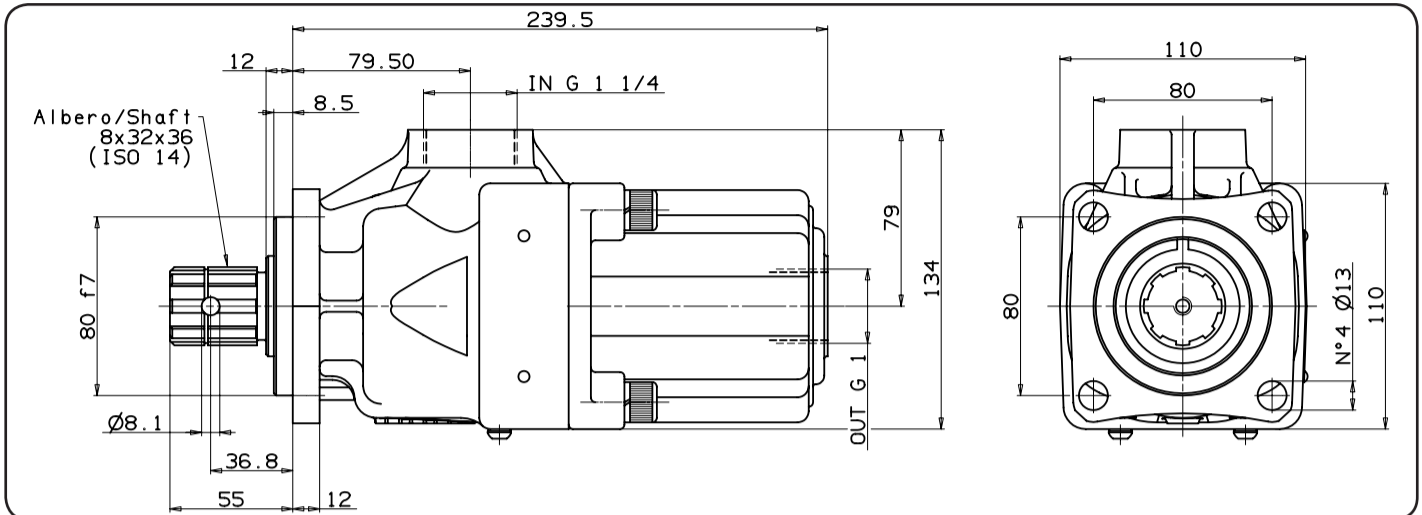
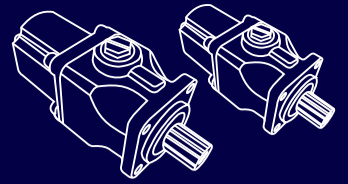


Pump type	Code	Displacement cm <sup>3</sup> /rev	Pressure		Max speed rpm	Weight kg
			Massima Max bar	Picco Peak bar		
<b>21 cc</b>	Bi - Directional	20,25	350	350	1800	13,5
<b>28 cc</b>	Bi - Directional	27				
<b>35 cc</b>	Bi - Directional	33,75				
<b>42 cc</b>	Bi - Directional	40,5				
<b>48 cc</b>	Bi - Directional	47,25				
<b>52 cc</b>	Bi - Directional	51,97	300	350	1500	13,3
<b>55 cc</b>	Bi - Directional	54				
<b>60 cc</b>	Bi - Directional	59,3				

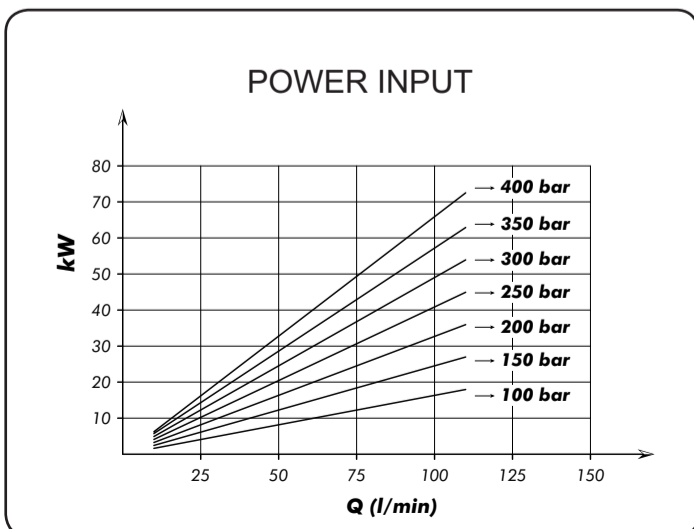
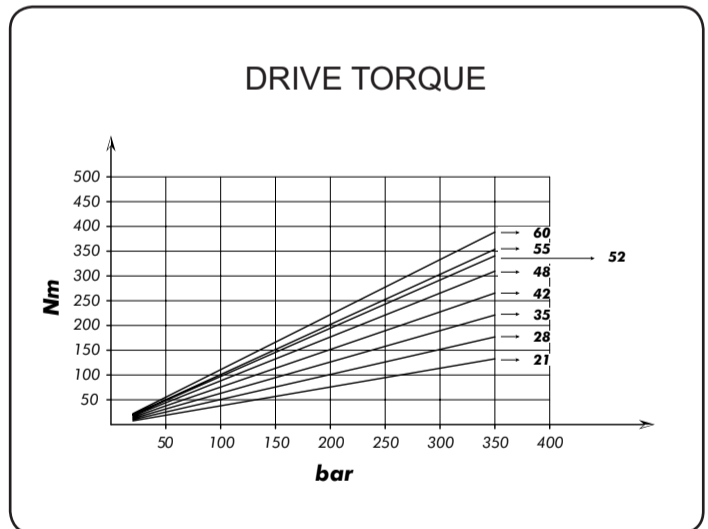
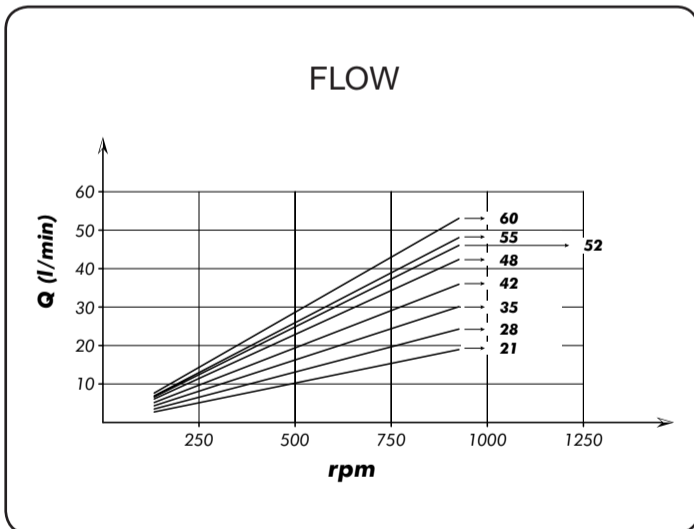


# A4PP

# High Pressure Axial Piston Pumps

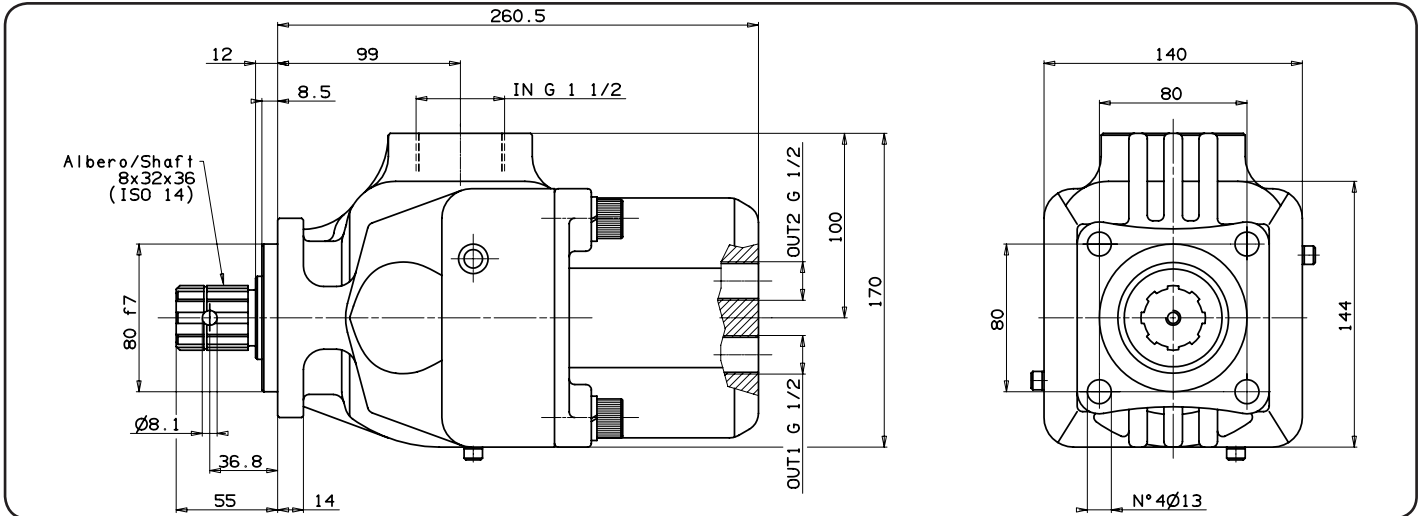
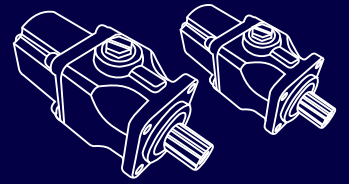


Pump type	Code	Displacement cm <sup>3</sup> /rev	Pressure		Max speed rpm	Weight kg
			Max bar	Peak bar		
<b>21 cc</b>	Bi - Directional	20,25	350	350	1800	14,1
<b>28 cc</b>	Bi - Directional	27				
<b>35 cc</b>	Bi - Directional	33,75				
<b>42 cc</b>	Bi - Directional	40,5				
<b>48 cc</b>	Bi - Directional	47,25				
<b>52 cc</b>	Bi - Directional	51,97	300	350	1500	13,9
<b>55 cc</b>	Bi - Directional	54				
<b>60 cc</b>	Bi - Directional	59,3				

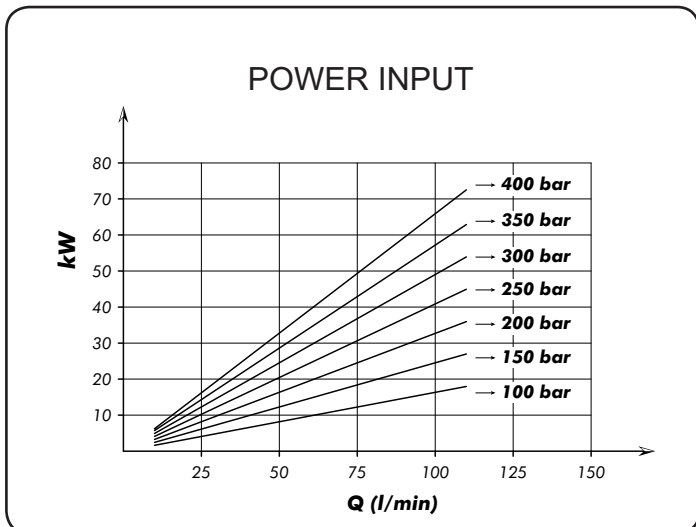
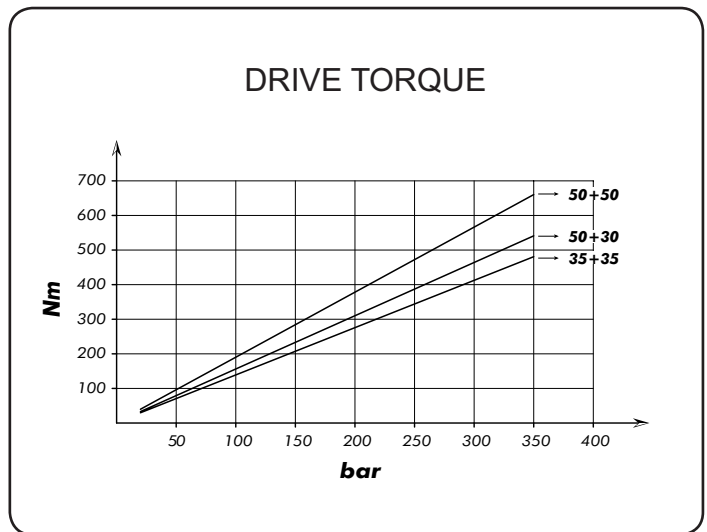
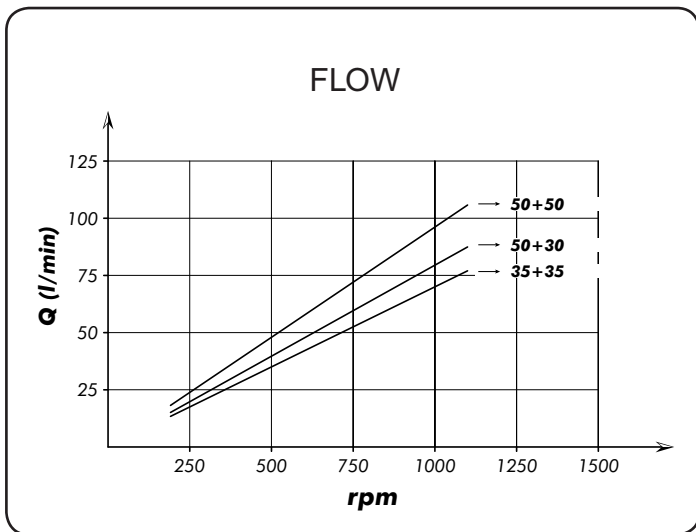


# A4PL

# High Pressure Axial Piston Pumps



Pump type	Code	Displacement cm <sup>3</sup> /rev	Pressure		Max speed rpm	Weight kg
			Max bar	Peak bar		
<b>35+35</b>	Bi-Direct. DualFlw	35+35	300	350	1500	21,4
<b>50+30</b>	Bi-Direct. DualFlw	50+30				21,2
<b>50+50</b>	Bi-Direct. DualFlw	50+50				





# Complete Product Range

## Piston Pumps

## Piston Motors

# DIN

DIN 5462 / ISO 14  
8x32x35  
8x32x36  
DIN 6885



**A8PD**



**A9MD**

# ISO

ISO 3019-2 (4 BOLTS)  
DIN 5480 -W25,30,35,40,45  
DIN 6885 -Ø20,25,30,35,40,45



**A8PO**



**A9MO**

# SAE

SAE B2 C4 - SAE D  
SAE J498b  
SAE J 744



**A8PS**



**A9MS**

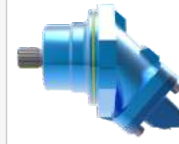
# M2

Fixed Plug-in

DIN 5480 / ISO 3019-2  
W30 - W35 - W40  
M21 - M22 - M23



**A8PL - Dual Flow**



**A9MF - Semi integrated**

# A4

DIN ISO 14  
8x32x36



**A4PP Single Flow**



**A4PL Dual Flow**

# A6

P2 Connection M8x125  
Woodruff key 3x6,5 NF E  
27-653 NF R 124-04  
(2 BOLTS)



**A6HP - High Pressure**



**A7GP - Gear Pump  
A7GM - Gear Motor**



# Contact



Gold Hydraulics, Ltd.

2019® Catalogue

All pictures and banners are patented by owner.

[www.goldhydraulics.com](http://www.goldhydraulics.com)

For more details and other catalogs,  
please send email to our team.

Hydraulic Bent Axis Piston Pumps  
Bent Axis Motors  
Dual Flow Piston Pumps and Gear Pumps...

Sales Team

[info@goldhydraulics.com](mailto:info@goldhydraulics.com)

Order

[order@goldhydraulics.com](mailto:order@goldhydraulics.com)

Management

[mail@goldhydraulics.com](mailto:mail@goldhydraulics.com)



[www.goldhydraulics.com](http://www.goldhydraulics.com)