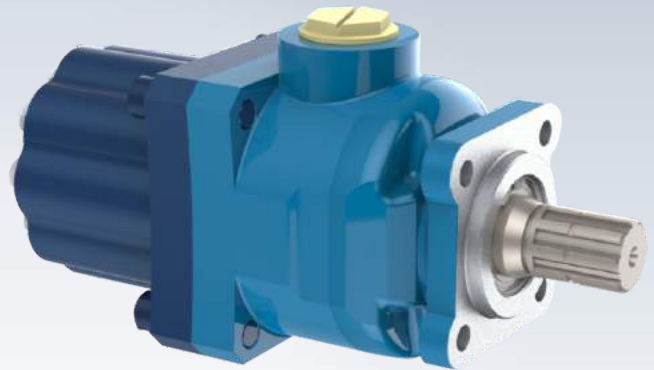
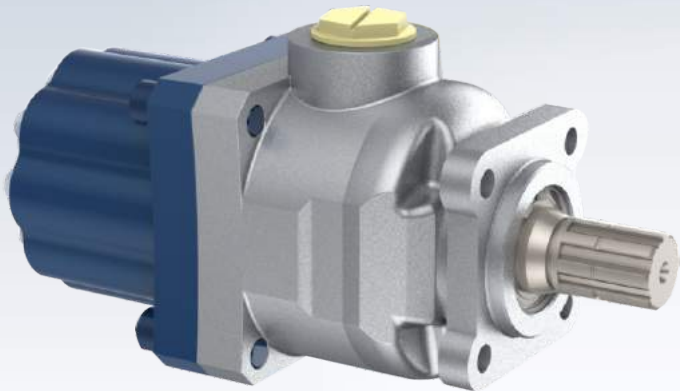


A4PP

Axial Piston Pumps
Single Flow

A4PL

Axial Piston Pumps
Dual Flow



A4PP - Axial Piston Pumps

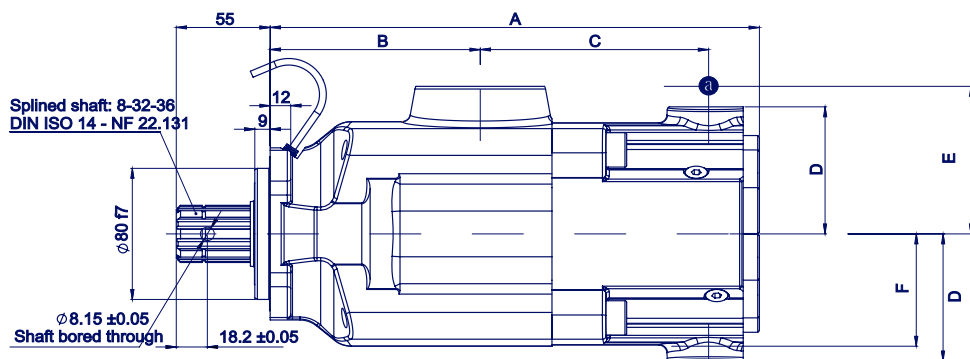
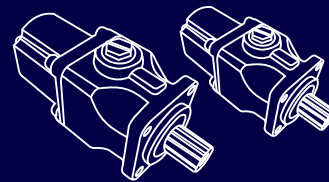
- Compact Design,
- Economical Conception,
- High Power Density,
- High Overall Efficiency,
- High Rotating Speeds,
- High Output Pressure,
- 350 bar Cont. Work. Pressure,
- 400 bar Peak Pressure,

A4PL - Dual Flow Piston Pumps

- Compact Design,
- Economical Conception,
- High Power Density,
- High Overall Efficiency,
- High Rotating Speeds,
- High Output Pressure,
- 350 bar Cont. Work. Pressure,
- 400 bar Peak Pressure,

A4PP

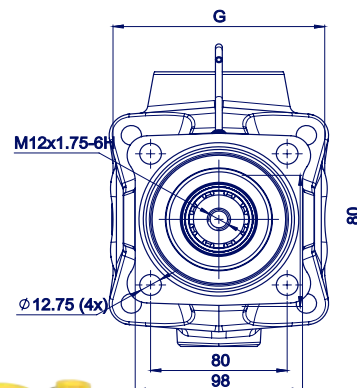
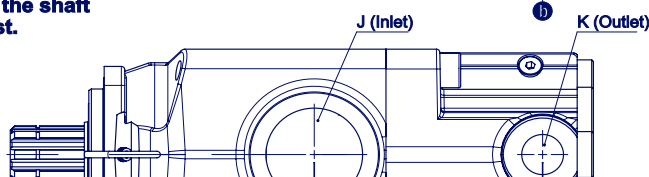
High Pressure Axial Piston Pumps



Splined shaft: 8-32-36
DIN ISO 14 - NF 22.131

Ø 8.15 ± 0.05
Shaft bored through

Additional bore on the shaft
available on request.



Pump reference	Displac. (cc/rev)		A	B	C	D	E	F	G	J	K	Weight (kg)	Overhang torque (N.m)
	a	b											

► Single flow

A4PP 25	25	-	261	102	126	47	78	64	107	G 1 1/2"	G 3/4"	15	17
A4PP 32	34	-	261	102	126	47	78	64	107	G 1 1/2"	G 3/4"	15	17
A4PP 40	43	-	261	102	126	47	78	64	107	G 1 1/2"	G 3/4"	15	17
A4PP 50	50	-	261	102	126	47	78	64	107	G 1 1/2"	G 3/4"	15	17
A4PP 63	66	-	290	123	138.8	69	90	69	124	G 2"	G 3/4"	23.5	17
A4PP 80	82	-	290	123	138.8	69	90	69	124	G 2"	G 3/4"	23.5	31.5
A4PP 100	104	-	290	123	138.8	69	90	69	124	G 2"	G 3/4"	23.5	31.5
A4PP 114	114	-	290	123	138.8	69	90	69	124	G 2"	G 3/4"	23.5	31.5

A4PP 25	26	-	226	94.9	103.3	62	73.2	54	98	G 1 1/2"	G 3/4"	12.5	12.6
A4PP 40	40	-	226	94.9	103.3	62	73.2	54	98	G 1 1/2"	G 3/4"	12.5	12.6
A4PP 50	50	-	226	94.9	103.3	62	73.2	54	98	G 1 1/2"	G 3/4"	12.5	12.6
A4PP 65	65	-	243	102.5	112.8	63	78	65	107	G 1 1/2"	G 3/4"	16	17.6
A4PP 80	78	-	247	102.5	116.3	63	78	65	107	G 1 1/2"	G 3/4"	17	21.3

► Twin-flow - 2 x 3 pistons

A4PP 2 x 32	32	32	290	123	138.8	69	90	69	124	G 2"	G 3/4"	23.5	31.5
A4PP 2 x 40	39	39	290	123	138.8	69	90	69	124	G 2"	G 3/4"	23.5	31.5
A4PP 2 x 50	52	52	290	123	138.8	69	90	69	124	G 2"	G 3/4"	23.5	31.5
A4PP 2 x 57	57	57	290	123	138.8	69	90	69	124	G 2"	G 3/4"	23.5	31.5
A4PP 2 x 75	75	75	302	126	147.8	72.5	90	72.5	135	G 2"	G 3/4"	26.8	38.7

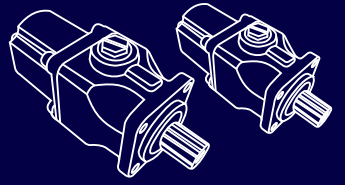
A4PP 75-40	75	40	302	126	147.8	72.5	90	72.5	135	G 2"	G 3/4"	27.4	38.7
A4PP 2 x 25	25	25	243	102.5	112.8	63	78	65	107	G 1 1/2"	G 3/4"	16	17.6
A4PP 2 x 32	32	32	243	102.5	112.8	63	78	65	107	G 1 1/2"	G 3/4"	16	17.6
A4PP 2 x 40	39	39	247	102.5	116.3	63	78	65	107	G 1 1/2"	G 3/4"	17	21.3

► Twin-flow - 2 x 5 pistons

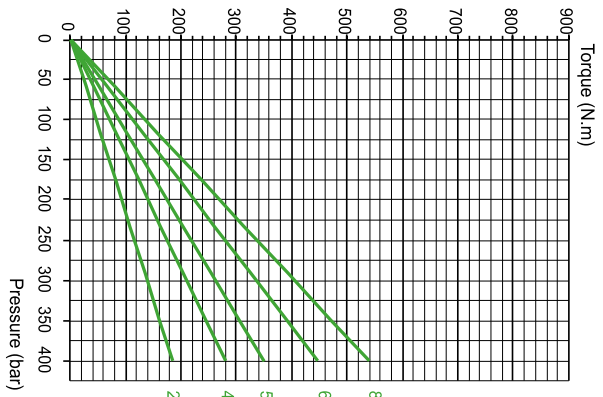
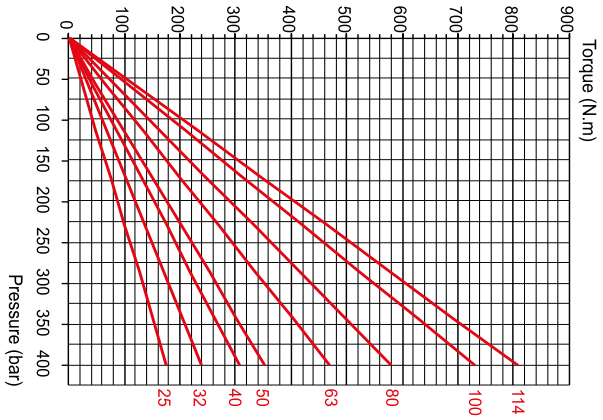
A4PP 2 x 32	32	32	287	123	133.8	77.5	90	69	124	G 2"	G 3/4"	24.6	34.4
A4PP 2 x 40	40	40	287	123	133.8	77.5	90	69	124	G 2"	G 3/4"	24.6	34.4
A4PP 2 x 55	55	55	287	123	133.8	77.5	90	69	124	G 2"	G 3/4"	24.6	34.4
A4PP 2 x 67	67	67	287	123	133.8	77.5	90	69	124	G 2"	G 3/4"	24.6	34.4
A4PP 55-33	55	33	287	123	133.8	77.5	90	69	124	G 2"	G 3/4"	24.6	34.4
A4PP 67-40	67	40	287	123	133.8	77.5	90	69	124	G 2"	G 3/4"	24.6	34.4

A4PP

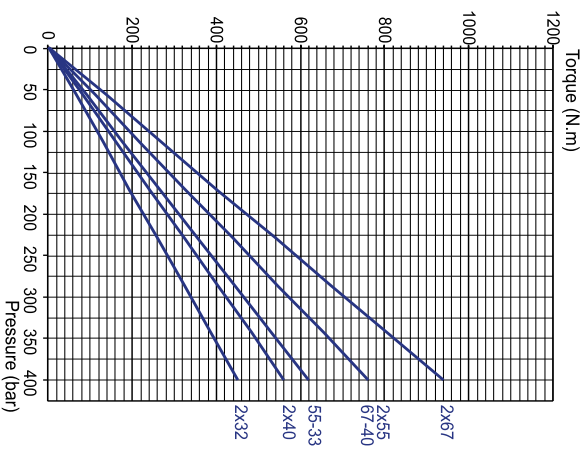
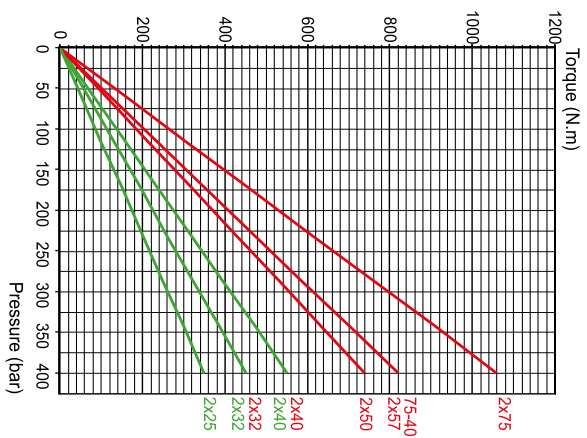
High Pressure Axial Piston Pumps



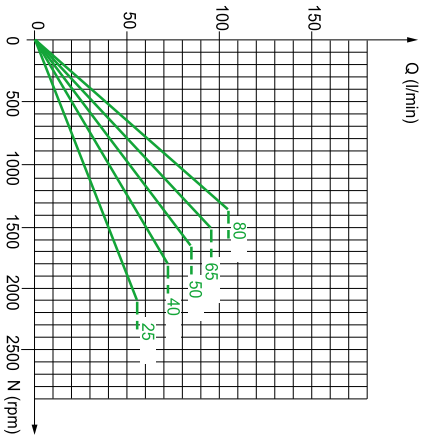
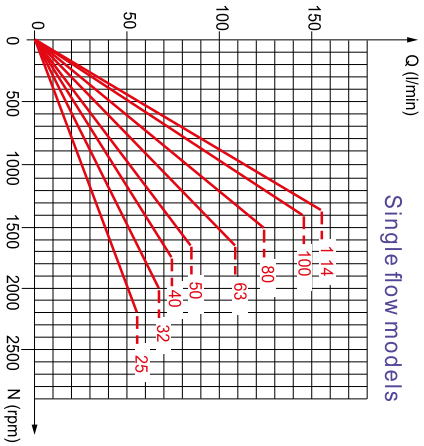
Single flow models



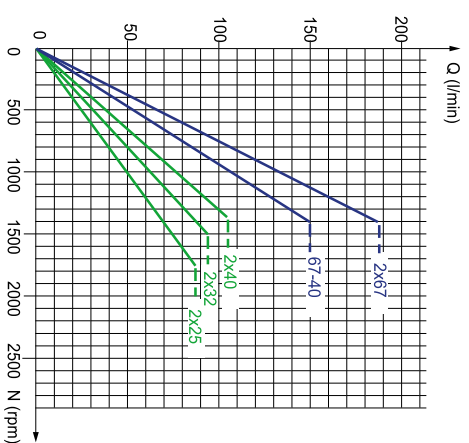
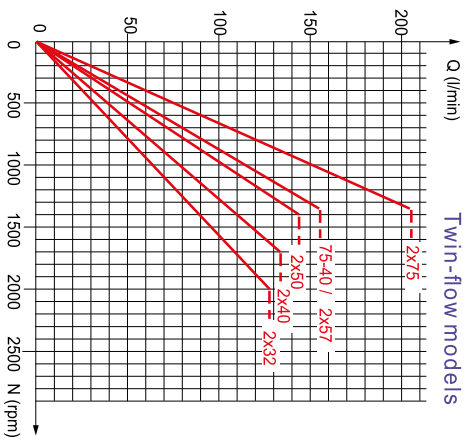
Twin-flow models



Single flow models

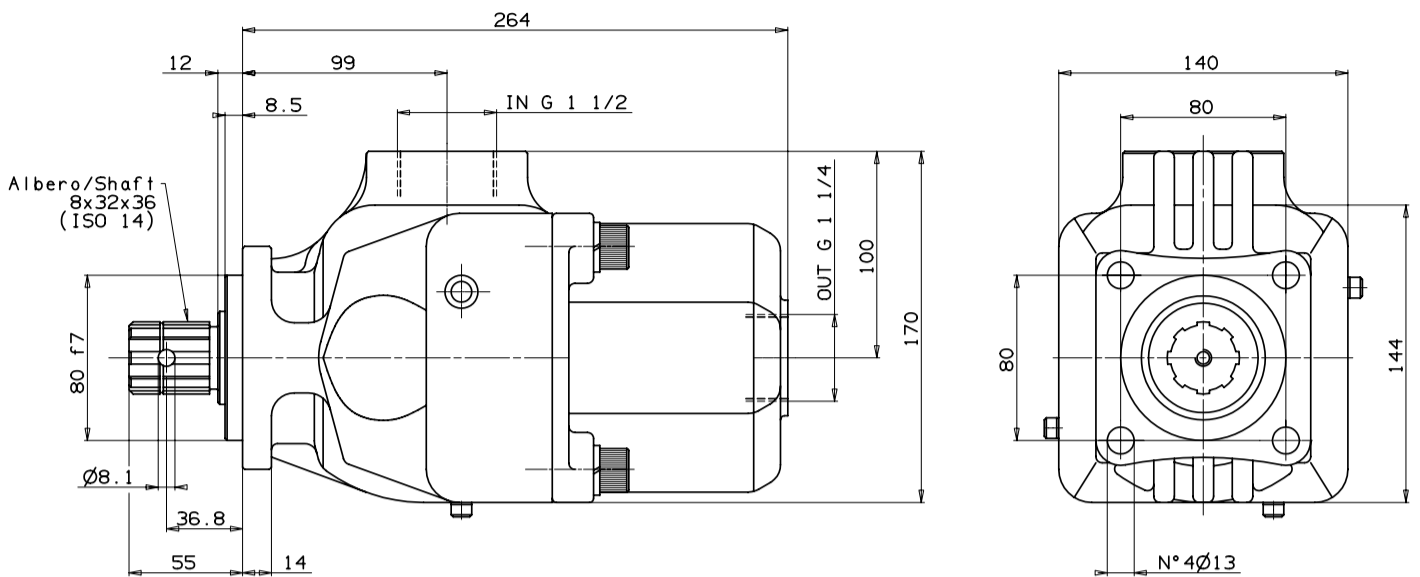
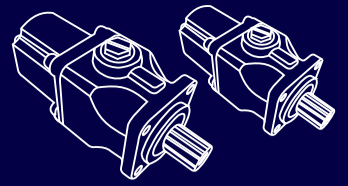


Twin-flow models

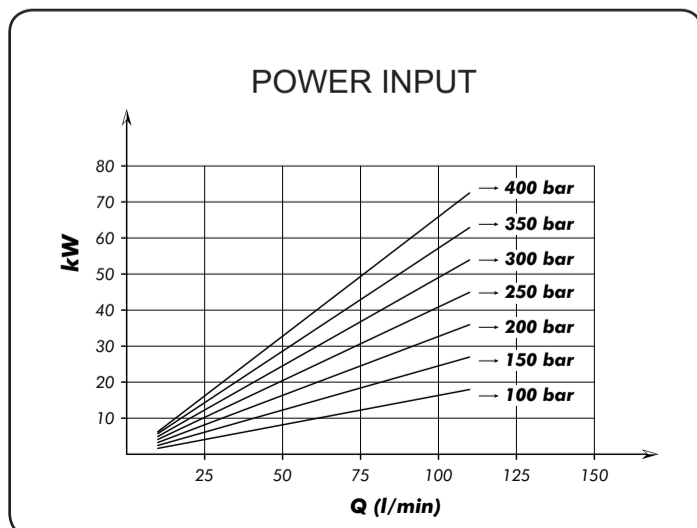
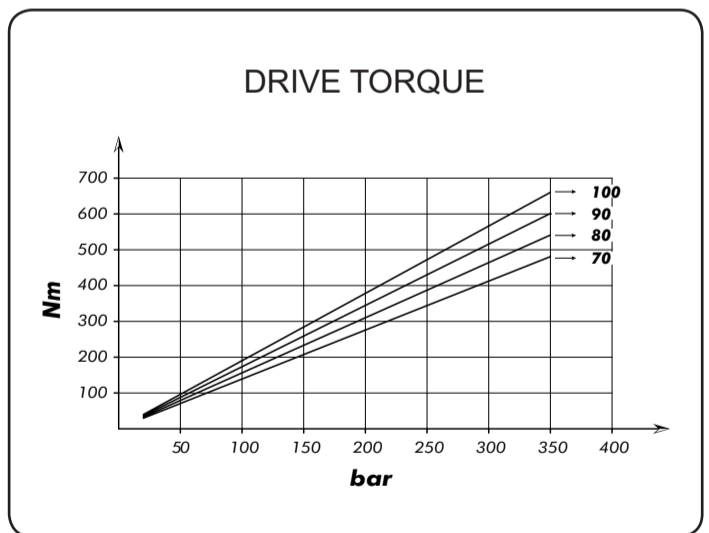
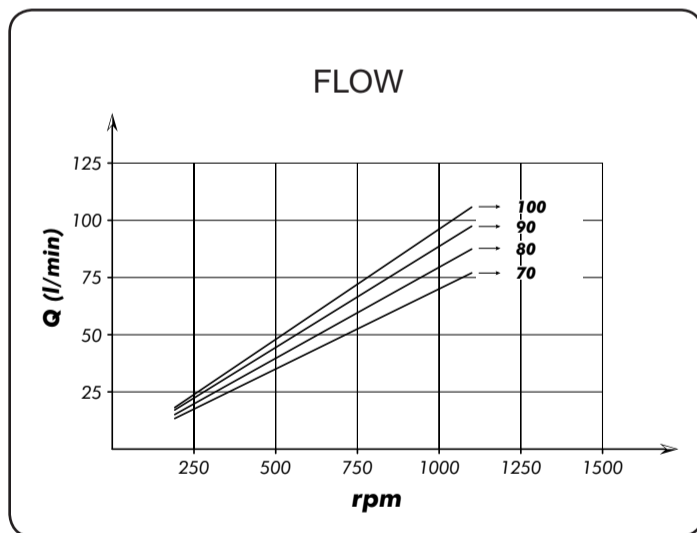


A4PP

High Pressure Axial Piston Pumps

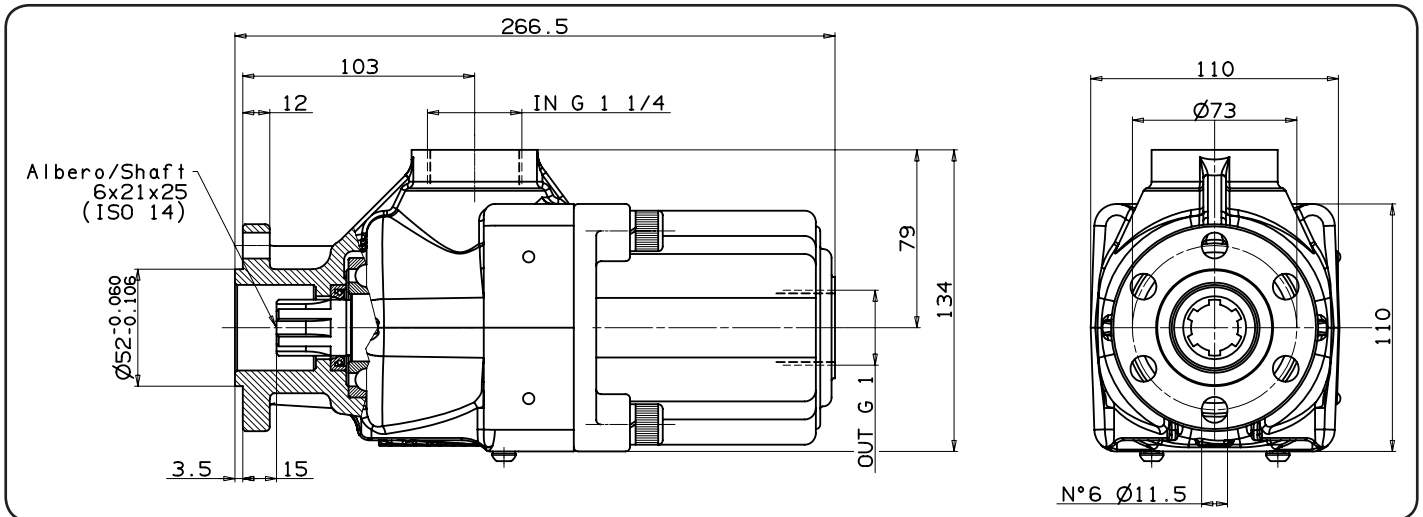
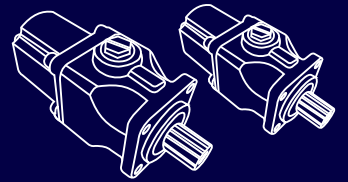


Pump type	Rotation	Displacement cm ³ /rev	Pressure		Max speed rpm	Weight kg
			Max bar	Peak bar		
70 cc	Bi-Directional	73	300	350	1500	20,9
80 cc	Bi-Directional	82,2				20,3
90 cc	Bi-Directional	91,4				20,3
100 cc	Bi-Directional	100,4				20

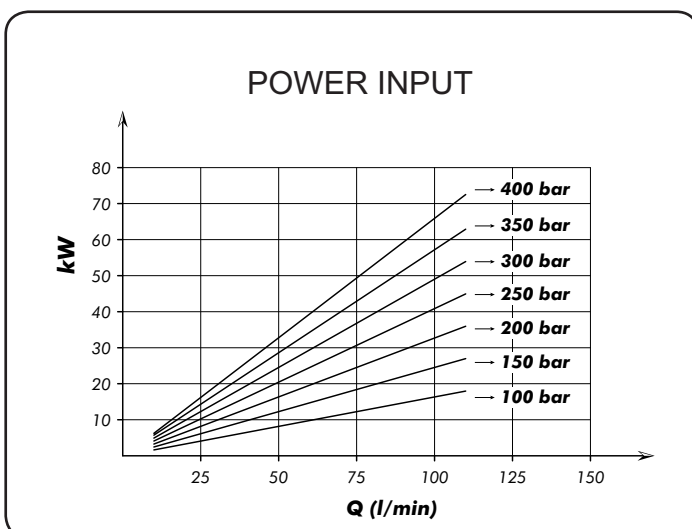
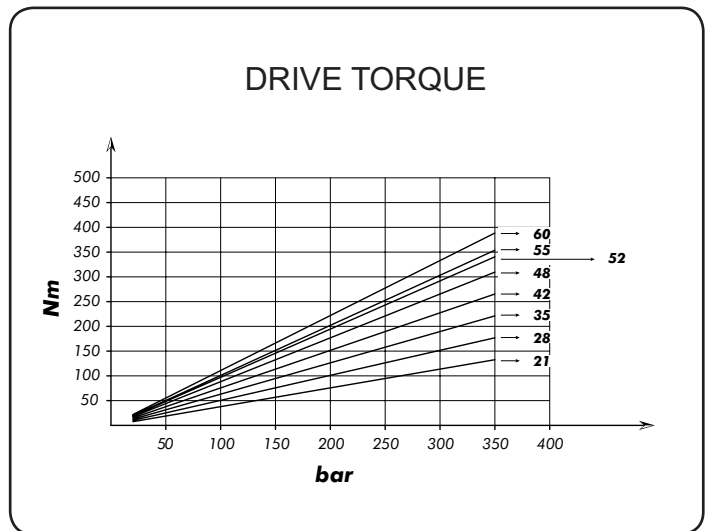
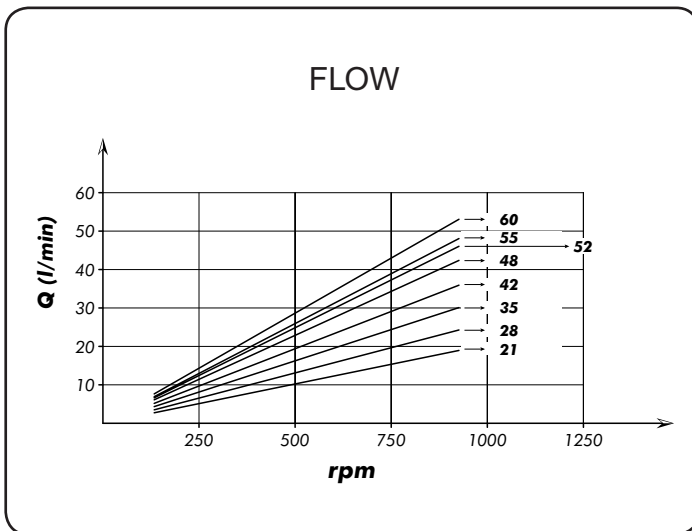


A4PP

High Pressure Axial Piston Pumps

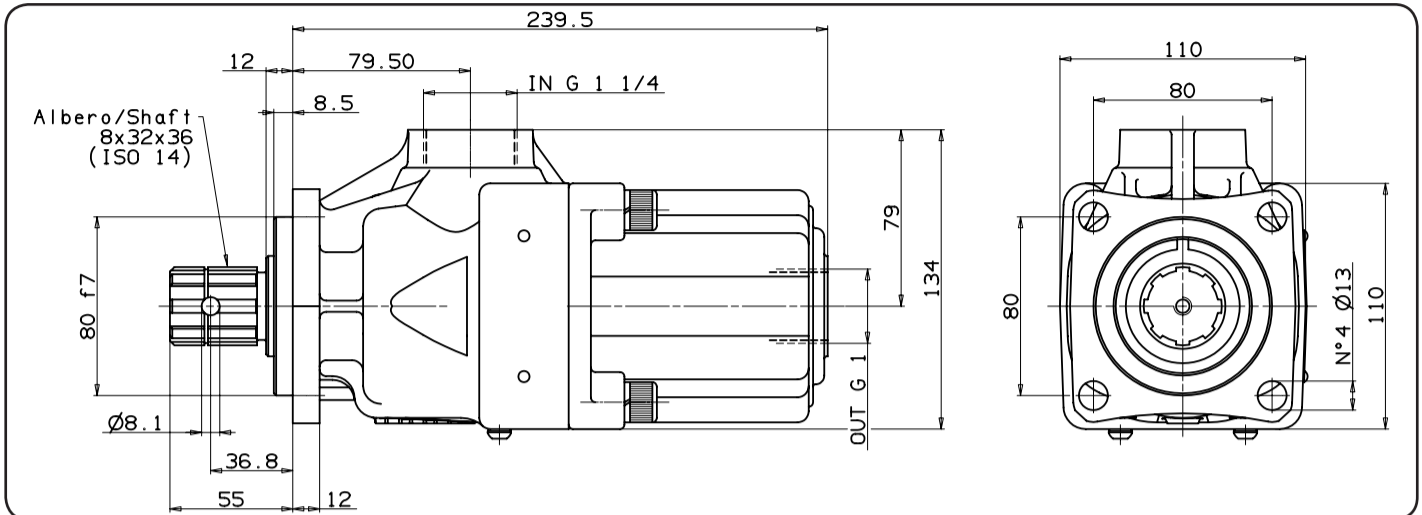
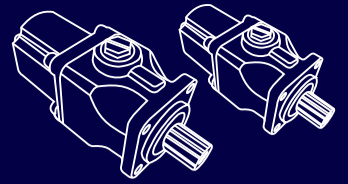


Pump type	Code	Displacement cm ³ /rev	Pressure		Max speed rpm	Weight kg
			Massima Max bar	Picco Peak bar		
21 cc	Bi - Directional	20,25	350	350	1800	13,5
28 cc	Bi - Directional	27				
35 cc	Bi - Directional	33,75				
42 cc	Bi - Directional	40,5				
48 cc	Bi - Directional	47,25				
52 cc	Bi - Directional	51,97	300	350	1500	13,3
55 cc	Bi - Directional	54				
60 cc	Bi - Directional	59,3				

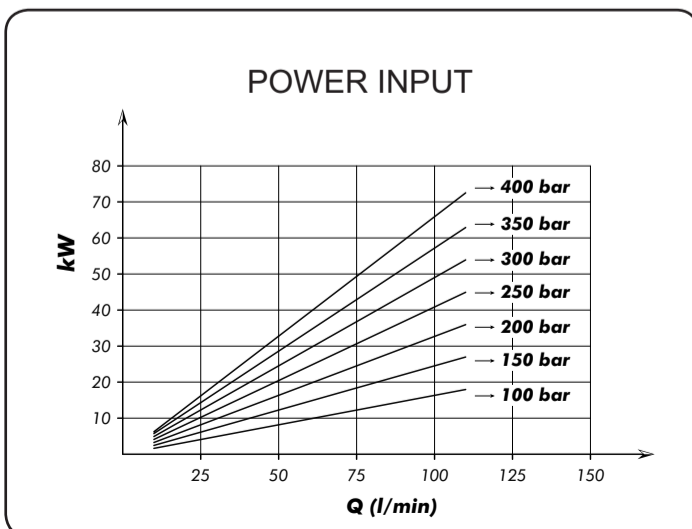
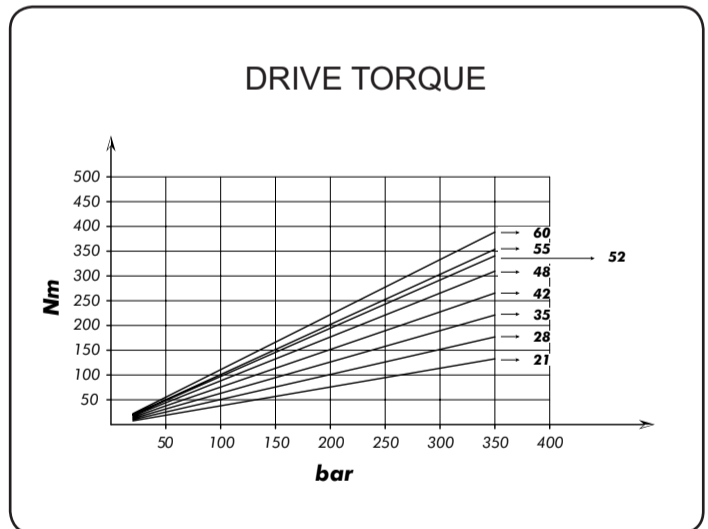
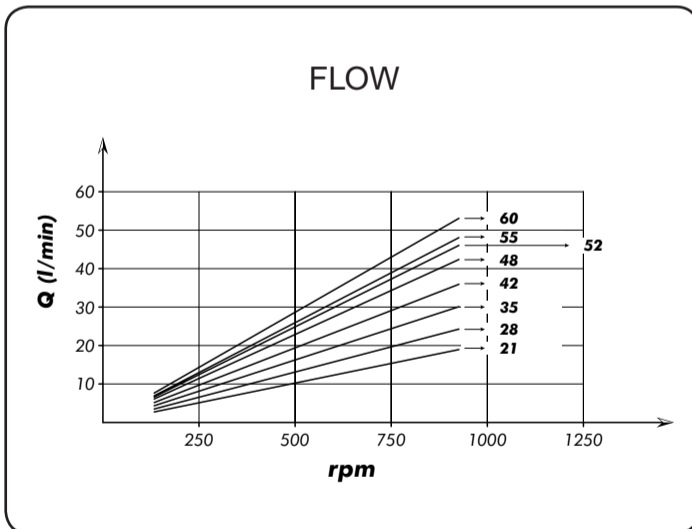


A4PP

High Pressure Axial Piston Pumps

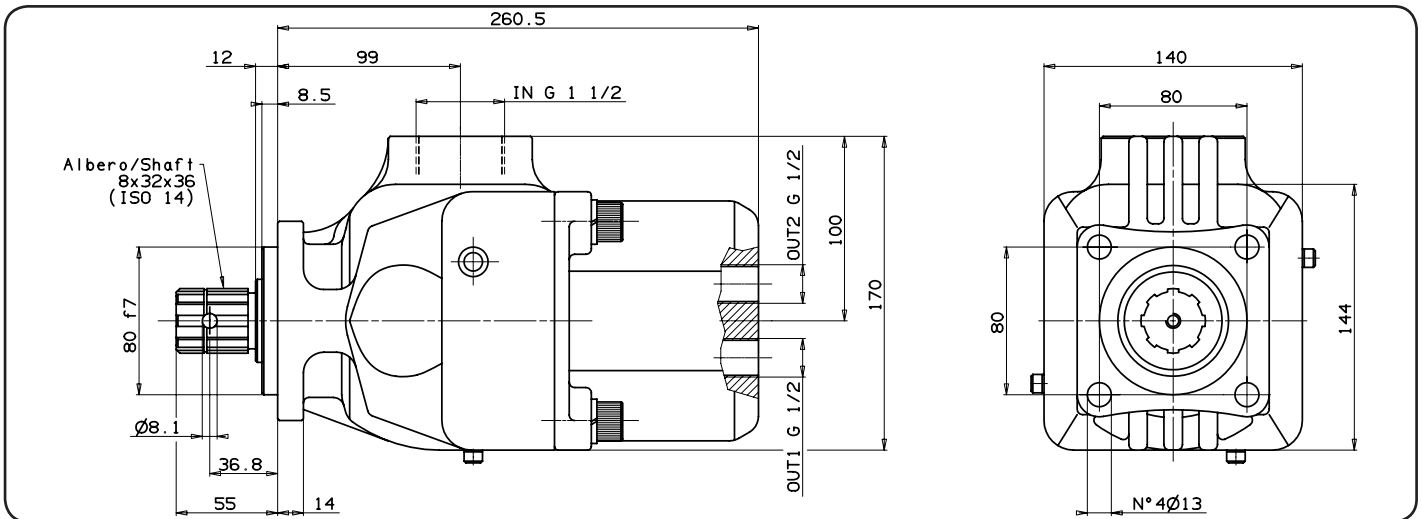
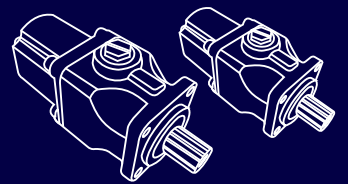


Pump type	Code	Displacement cm ³ /rev	Pressure		Max speed rpm	Weight kg
			Max bar	Peak bar		
21 cc	Bi - Directional	20,25	350	350	1800	14,1
28 cc	Bi - Directional	27				
35 cc	Bi - Directional	33,75				
42 cc	Bi - Directional	40,5				
48 cc	Bi - Directional	47,25				
52 cc	Bi - Directional	51,97	300	350	1500	13,9
55 cc	Bi - Directional	54				
60 cc	Bi - Directional	59,3				

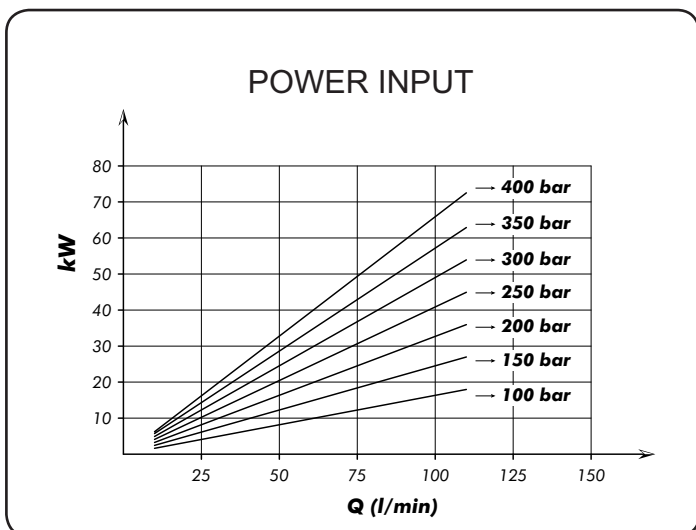
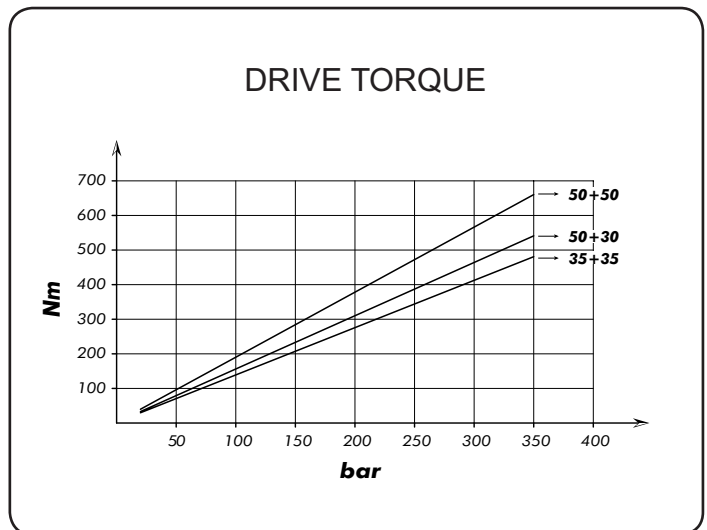
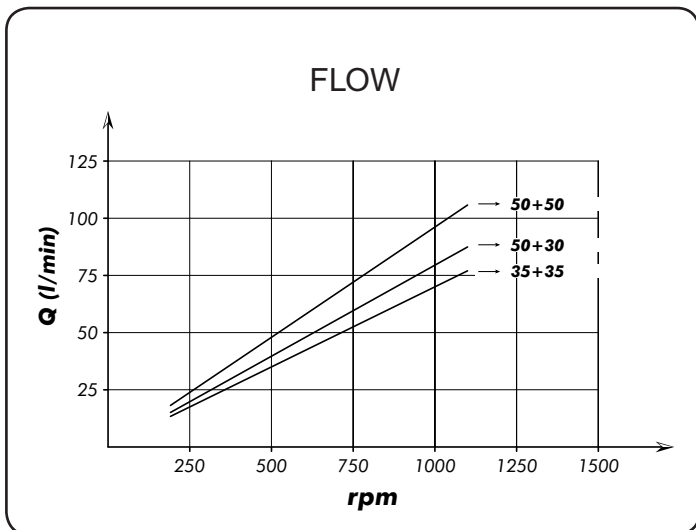


A4PL

High Pressure Axial Piston Pumps



Pump type	Code	Displacement cm ³ /rev	Pressure		Max speed rpm	Weight kg
			Max bar	Peak bar		
35+35	Bi-Direct. DualFlw	35+35	300	350	1500	21,4
50+30	Bi-Direct. DualFlw	50+30				21,2
50+50	Bi-Direct. DualFlw	50+50				



Complete Product Range

Piston Pumps

Piston Motors

DIN

DIN 5462 / ISO 14
8x32x35
8x32x36
DIN 6885



A8PD



A9MD

ISO

ISO 3019-2 (4 BOLTS)
DIN 5480 -W25,30,35,40,45
DIN 6885 -Ø20,25,30,35,40,45



A8PO



A9MO

SAE

SAE B2 C4 - SAE D
SAE J498b
SAE J 744



A8PS



A9MS

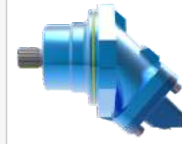
M2

Fixed Plug-in

DIN 5480 / ISO 3019-2
W30 - W35 - W40
M21 - M22 - M23



A8PL - Dual Flow



A9MF - Semi integrated

A4

DIN ISO 14
8x32x36



A4PP Single Flow



A4PL Dual Flow

A6

P2 Connection M8x125
Woodruff key 3x6,5 NF E
27-653 NF R 124-04
(2 BOLTS)



A6HP - High Pressure



**A7GP - Gear Pump
A7GM - Gear Motor**

Contact



Gold Hydraulics, Ltd.

2019® Catalogue

All pictures and banners are patented by owner.

www.goldhydraulics.com

For more details and other catalogs,
please send email to our team.

Hydraulic Bent Axis Piston Pumps
Bent Axis Motors
Dual Flow Piston Pumps and Gear Pumps...

Sales Team

info@goldhydraulics.com

Order

order@goldhydraulics.com

Management

mail@goldhydraulics.com



www.goldhydraulics.com