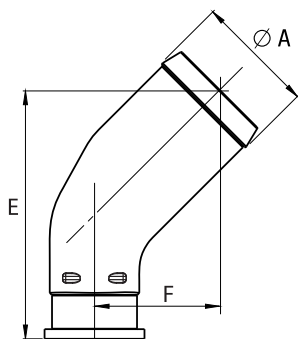


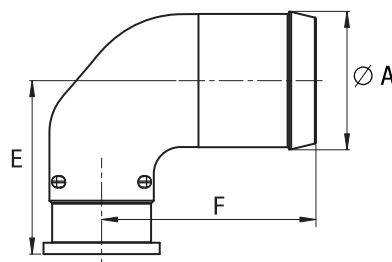
# ByPass Valve Inlet Fittings

## 45° elbow fittings



Reference	Ø hose	Ø A	E	F
17894	1 1/2"	39.1	91.7	46.7
17896	42	43	91.7	46.7
17897	1 3/4"	46	91.7	46.7
17893	2"	51.8	108.4	54.4
17892	2 1/2"	64.5	125.2	62.2

## 90° elbow fittings

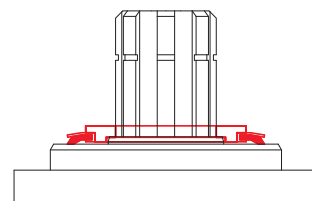


Reference	Ø hose	Ø A	E	F
17947	1 1/2"	39.1	58.6	79.5
17946	2"	51.8	64.9	80.2
17945	2 1/2"	64.5	71.3	87.5

## DEFLECTOR TO PROTECT SHAFT SEALS

This deflector ensures the protection of the pump shaft seals.  
In particular, it protects the pump from projections of dirt from the road in cardan drive installations.

Reference: **DEF 4111**

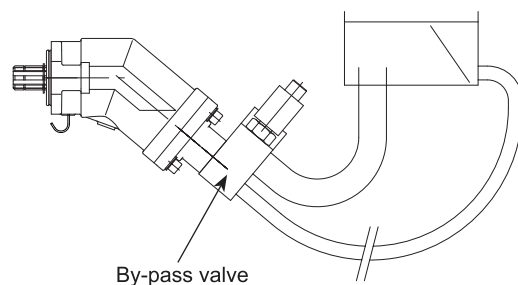


## BY-PASS VALVE PUMPS

For pump applications where the pump is driven by a continuous running PTO (PTO which cannot be disengaged), offers a by-pass valve which is fitted onto the back of the pump.

This solution allows the continuous running of the pump:  
without creating problems of fluid overheating;  
without affecting pump service life;  
with no modifications necessary to the hydraulic circuit of the equipment.

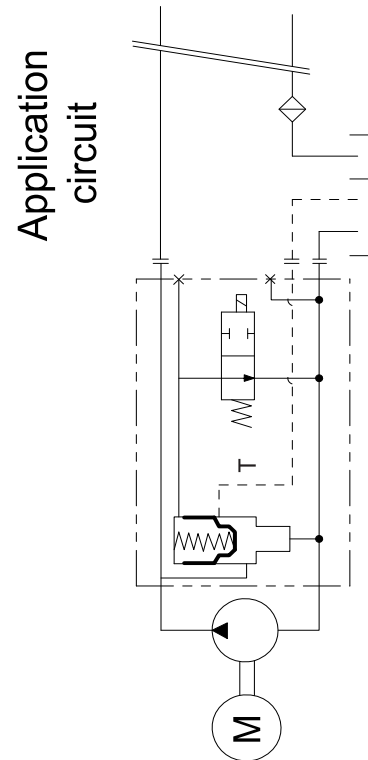
part number	12 Volts	24 Volts
12 to 63	63 05211	63 05179
80 to 130	80 05222	80 05221



# ByPass Valve Inlet Fittings

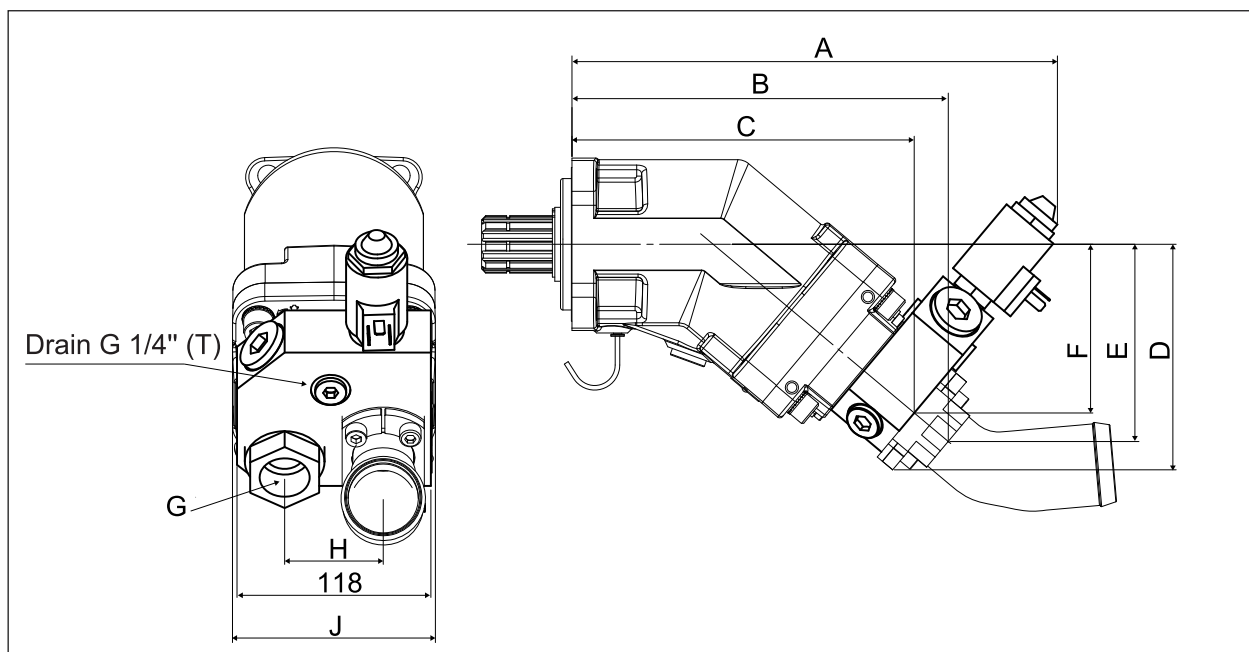
## overhang torque with by-pass

Pump reference	Weight		Overhang torque	
	without inlet fitting (kg)	with inlet fitting (kg)	without inlet fitting (N.m)	with inlet fitting (N.m)
12	12.8	13.25	16.32	16.90
18	12.85	13.3	16.39	16.96
25	12.9	13.35	16.44	17.02
32	14.7	15.15	18.98	19.56
41	14.75	15.2	19.04	19.62
50	14.8	15.25	20.05	20.67
63	14.85	15.3	20.12	20.73
80	18.45	18.9	27.16	27.82
108	18.55	19	27.31	27.97
130	18.95	19.4	28.16	28.93



## Dimensions with by-pass valve

Pump reference	A	B	C	D	E	F	G	H	J
12 / 18 / 25	289.35	223.04	202.19	132.20	114.72	97.58 3/4"	54	108	
32 / 41	295.5	229	208.3	137.3	120.1	102.7 3/4"	54	108	
50 / 63	307.1	240.4	220	147.1	129.7	112.5 3/4"	54	108	
80 / 108	334	269	246.7	157.8	143.9	124.8 1"	60	123	
130	336.3	271.3	249	159.7	145.8	126.7 1"	60	123.5	



# Complete Product Range

## Piston Pumps

## Piston Motors

# DIN

DIN 5462 / ISO 14  
8x32x35  
8x32x36  
DIN 6885



**A8PD**



**A9MD**

# ISO

ISO 3019-2 (4 BOLTS)  
DIN 5480 -W25,30,35,40,45  
DIN 6885 -Ø20,25,30,35,40,45



**A8PO**



**A9MO**

# SAE

SAE B2 C4 - SAE D  
SAE J498b  
SAE J 744



**A8PS**



**A9MS**

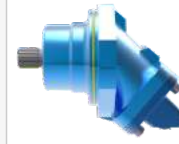
# M2

Fixed Plug-in

DIN 5480 / ISO 3019-2  
W30 - W35 - W40  
M21 - M22 - M23



**A8PL - Dual Flow**



**A9MF - Semi integrated**

# A4

DIN ISO 14  
8x32x36



**A4PP Single Flow**



**A4PL Dual Flow**

# A6

P2 Connection M8x125  
Woodruff key 3x6,5 NF E  
27-653 NF R 124-04  
(2 BOLTS)



**A6HP - High Pressure**



**A7GP - Gear Pump  
A7GM - Gear Motor**

# Contact



Gold Hydraulics, Ltd.

2019® Catalogue

All pictures and banners are patented by owner.

[www.goldhydraulics.com](http://www.goldhydraulics.com)

For more details and other catalogs,  
please send email to our team.

Hydraulic Bent Axis Piston Pumps  
Bent Axis Motors  
Dual Flow Piston Pumps and Gear Pumps...

Sales Team

[info@goldhydraulics.com](mailto:info@goldhydraulics.com)

Order

[order@goldhydraulics.com](mailto:order@goldhydraulics.com)

Management

[mail@goldhydraulics.com](mailto:mail@goldhydraulics.com)



[www.goldhydraulics.com](http://www.goldhydraulics.com)